

CLOPAY COMMERCIAL – MODELS 520, 520S industrial series



Model 520, 12'2" x 16' Doors; Shown with 24" x 6" Lites

CONSTRUCTION	STEEL	EFFICIENCY	WARRANTY
2" THICKNESS	20 GAUGE	6.6 R-VALUE (520S)	10YR LIMITED CONSTRUCTION



RIBBED STEEL DOORS

Available non-insulated (520) or insulated (520S) with environmentally safe polystyrene insulation conformed to panel with a 30 gauge prepainted steel back cover. Ideal for commercial and industrial building applications.

- Polystyrene insulation available on 520S.
- 3-stage paint process delivers a virtually maintenance-free finish.
- Tog-L-Loc® advanced design, eliminates the need for antiquated welds and rivet construction, improving rust and leak prevention.
- Injection-molded lite frames with integral weatherseal are durable and seal against the elements. Many glass options available for visibility, privacy or energy efficiency.



Panels are prepainted inside and out to inhibit rust. Hot-dipped, galvanized steel is painted with primer and given a tough oven-baked polyester top coat to provide the most rust-resistant steel door available. Ten-year warranty against rust-through.

PANEL DESIGNS



Deep Ribbed

COLOR OPTIONS



Standard White

Chocolate

Due to the printing process, colors may vary.

CUSTOM PAINT OPTION



Color Blast® offers more than 1,500 Sherwin-Williams® color options to complement your building design. This durable two-part paint system has been thoroughly tested and is backed by a five-year warranty.

Due to solar reflective formulation to meet greater than a 38 LRV, some colors may not be available.

FEATURES

STANDARD HARDWARE

- TPE astragal in aluminum retainer
- Commercial 10-ball steel rollers (nylon tires available)
- Steel step plate and lift handle
- Galvanized steel end stiles
- Inside slide lock for increased security
- 2" (50.8 mm) or 3" (76.2 mm) track
- 10,000 cycle springs
- Galvanized aircraft cable with minimum 7:1 safety factor
- Variety of track configurations to meet building specifications

MATERIALS AND CONSTRUCTION

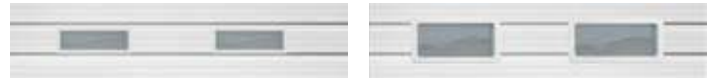
Panel Thickness	2" (50.8 mm)
Insulation	1-3/8" (34.9 mm) polystyrene (Available on Model 520S)
R-value	6.6*
Joining System	Tog-L-Loc®
Exterior Steel	20 gauge (.034" min.) (.86 mm)
Interior Cover	Painted steel back cover (Available on Model 520S) 30 gauge (.12" min.) (.305 mm) 24 gauge (.023" min.) (.58 mm) optional
Exterior Design	Smooth steel, deep ribbed
Max Width	32'2" (9.8 m)
Max Height	26' (7.9 m)
Exterior Colors	Standard White and Chocolate. Also available in Color Blast®
Interior Color	Standard White
Limited Warranties	10-year rust-through 1-year materials and workmanship

*Calculated door section R-value is in accordance with DASMA TDS-163.

For special sizes, applications and options, consult Commercial Information Assistance (CIA) at 1-800-526-4301.

ADDITIONAL OPTIONS

WINDOW OPTIONS



24" x 6"

24" x 12"



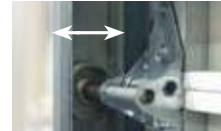
Full View

Glazing options for Model 520 include DSB glass, plexiglass and wire glass. Double pane insulated windows are available for Model 520S. Prepainted full-view section with Standard White or Chocolate finish available with DSB glass, plexiglass, wire glass or insulated glass.

HEAVY-DUTY HARDWARE (where not standard)



Double-end hinge



3" Track



High performance hardware features 10 gauge end hinges, heavy-duty top bracket and 3" sealed roller with 5/8" stem.

MULLIONS



Carry-away, roll-away or swing-up mullions are available on select sizes.

BREAK-AWAY SECTION



Single section and double sections available on select sizes.

PASS DOOR



32" wide x 80" high (.81 m x 2.3 m), max 16'2" (4.9 m) wide section.

EXHAUST PORT



Can be cut into any type of sectional door. Available in select sizes.



WindCode® reinforcement available up to W1 design pressure (DP) 14 PSF, depending on size. Doors tested 50% greater than DP.



EXTENDED 8-YEAR HARDWARE WARRANTY

Upgrade your standard door with industrial-grade components.

HIGH CYCLE SPRINGS



25,000, 50,000 or 100,000 cycle springs available.

DISTRIBUTED BY:



For more information on these and other Clopay products, call 1-800-526-4301 or visit clopaycommercial.com



©2018 Clopay Building Products Company, Inc., a Griffon company.



CMDC-0520-05_REV1118

CLOPAY COMMERCIAL – MODELS 522, 522S industrial series



Model 522, 14'2" x 16' Doors; Shown with 24" x 6" Lites

CONSTRUCTION	STEEL	EFFICIENCY	WARRANTY
2" THICKNESS	20 GAUGE	6.6 R-VALUE	10YR LIMITED CONSTRUCTION
(522S)			

FLUSH STEEL DOORS

Available non-insulated (522) or insulated (522S) with environmentally safe polystyrene insulation conformed to panel with a 30 gauge prepainted steel back cover. Ideal for commercial and industrial building applications.

- Polystyrene insulation available on 522S.
- 3-stage paint process delivers a virtually maintenance-free finish.
- Tog-L-Loc® advanced design, eliminates the need for antiquated welds and rivet construction, improving rust and leak prevention.
- Injection-molded lite frames with integral weatherseal are durable and seal against the elements. Many glass options available for visibility, privacy or energy efficiency.



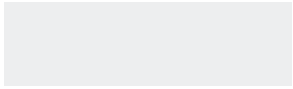
Panels are prepainted inside and out to inhibit rust. Hot-dipped, galvanized steel is painted with primer and given a tough oven-baked polyester top coat to provide the most rust-resistant steel door available. Ten-year warranty against rust-through.

PANEL DESIGNS



Flush

COLOR OPTIONS



Standard White



Chocolate

Due to the printing process, colors may vary.

CUSTOM PAINT OPTION



Color Blast® offers more than 1,500 Sherwin-Williams® color options to complement your building design. This durable two-part paint system has been thoroughly tested and is backed by a five-year warranty.

Due to solar reflective formulation to meet greater than a 38 LRV, some colors may not be available.

FEATURES

STANDARD HARDWARE

- TPE astragal in aluminum retainer
- Commercial 10-ball steel rollers (nylon tires available)
- Steel step plate and lift handle
- Galvanized steel end stiles
- Inside slide lock for increased security
- 2" (50.8 mm) or 3" (76.2 mm) track
- 10,000 cycle springs
- Galvanized aircraft cable with minimum 7:1 safety factor
- Variety of track configurations to meet building specifications

MATERIALS AND CONSTRUCTION

Panel Thickness	2" (50.8 mm)
Insulation	1-3/8" (34.9 mm) polystyrene (Available on Model 522S)
R-value	6.6*
Joining System	Tog-L-Loc®
Exterior Steel	20 gauge (.034" min.) (.86 mm)
Interior Cover	Painted steel back cover (Available on Model 522S) 30 gauge (.12" min.) (.305 mm) 24 gauge (.023" min.) (.58 mm) optional
Exterior Design	Smooth steel, flush
Max Width	24'2" (7.4 m)
Max Height	24' (7.3 m)
Exterior Colors	Standard White and Chocolate. Also available in Color Blast®
Interior Color	Standard White
Limited Warranties	10-year rust-through 1-year materials and workmanship

*Calculated door section R-value is in accordance with DASMA TDS-163.

For special sizes, applications and options, consult Commercial Information Assistance (CIA) at 1-800-526-4301.



For more information on these and other Clopay products, call 1-800-526-4301 or visit clopaycommercial.com



©2018 Clopay Building Products Company, Inc., a Griffon company.

ADDITIONAL OPTIONS

WINDOW OPTIONS



24" x 6"



24" x 12"



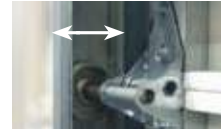
Full View

Glazing options for Model 522 include DSB glass, plexiglass and wire glass. Double pane insulated windows are available for Model 522S. Prepainted full-view section with Standard White or Chocolate finish available with DSB glass, plexiglass, wire glass or insulated glass.

HEAVY-DUTY HARDWARE (where not standard)



Double-end hinge



3" Track



High performance hardware features 10 gauge end hinges, heavy-duty top bracket and 3" sealed roller with 5/8" stem.

MULLIONS



Carry-away, roll-away or swing-up mullions are available on select sizes.

BREAK-AWAY SECTION



Single section and double sections available on select sizes.

PASS DOOR



32" wide x 80" high (.81 m x 2.3 m), max 16'2" (4.9 m) wide section.

EXHAUST PORT



Can be cut into any type of sectional door. Available in select sizes.



WindCode® reinforcement available up to W1 design pressure (DP) 14 PSF, depending on size. Doors tested 50% greater than DP.



EXTENDED 8-YEAR HARDWARE WARRANTY

Upgrade your standard door with industrial-grade components.

HIGH CYCLE SPRINGS



25,000, 50,000 or 100,000 cycle springs available.

DISTRIBUTED BY:



CLOPAY COMMERCIAL – MODELS 524, 524V, 524S industrial series



Model 524, 10'2" x 14" Doors; Shown with 24" x 6" Lites

CONSTRUCTION	STEEL	EFFICIENCY	WARRANTY
2"	24	6.6	10YR
THICKNESS	GAUGE	R-VALUE	LIMITED
		(524V, 524S)	CONSTRUCTION

RIBBED STEEL DOORS

Available non-insulated (524) or insulated (524V/524S) with environmentally safe polystyrene insulation conformed to panel. Ideal for commercial and industrial building applications.

- Polystyrene insulation available on 524V and 524S.
- 3-stage paint process delivers a virtually maintenance-free finish.
- Tog-L-Loc® advanced design, eliminates the need for antiquated welds and rivet construction, improving rust and leak prevention.
- Injection-molded lite frames with integral weatherseal are durable and seal against the elements. Many glass options available for visibility, privacy or energy efficiency.



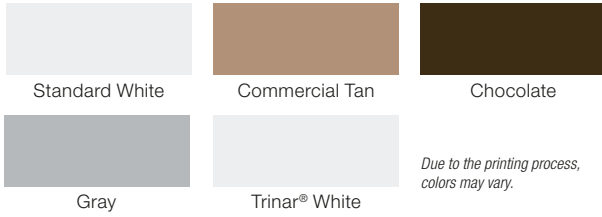
Panels are preprimed inside and out to inhibit rust. Hot-dipped, galvanized steel is painted with primer and given a tough oven-baked polyester top coat to provide the most rust-resistant steel door available. Ten-year warranty against rust-through.

PANEL DESIGN



Deep Ribbed

COLOR OPTIONS



Due to the printing process, colors may vary.

CUSTOM PAINT OPTION



Color Blast® offers more than 1,500 Sherwin-Williams® color options to complement your building design. This durable two-part paint system has been thoroughly tested and is backed by a five-year warranty.

Due to solar reflective formulation to meet greater than a 38 LRV, some colors may not be available.

FEATURES

STANDARD HARDWARE

- TPE astragal in aluminum retainer
- Commercial 10-ball steel rollers (nylon tires available)
- Steel step plate and lift handle
- Galvanized steel end stiles
- Inside slide lock for increased security
- 2" (50.8 mm) or 3" (76.2 mm) track
- 10,000 cycle springs
- Galvanized aircraft cable with minimum 7:1 safety factor
- Variety of track configurations to meet building specifications

MATERIALS AND CONSTRUCTION

Panel Thickness	2" (50.8 mm)
Insulation	1-3/8" (34.9 mm) polystyrene (Available on Models 524V, 524S)
R-value	6.6*
Joining System	Tog-L-Loc®
Exterior Steel	24 gauge (.023" min.) (.58 mm)
Interior Cover	Vinyl backing (Available on Model 524V) Painted steel back cover (Available on Model 524S) 30 gauge (.12" min.) (.305 mm) 24 gauge (.023" min.) (.58 mm) optional
Exterior Design	Smooth steel, deep ribbed
Max Width	26'2" (8 m)
Max Height	24' (7.3 m)
Exterior Colors	Standard White, Commercial Tan, Chocolate, Gray and Trinar® White. Also available in Color Blast®
Interior Color	Standard White
Limited Warranties	10-year rust-through 1-year materials and workmanship

*Calculated door section R-value is in accordance with DASMA TDS-163.

For special sizes, applications and options, consult Commercial Information Assistance (CIA) at 1-800-526-4301.

ADDITIONAL OPTIONS

WINDOW OPTIONS



Glazing options for 524 include DSB, plexiglass and wire glass. Double pane insulated windows are available for Models 524V and 524S. Prepainted full-view section with White or Chocolate finish available with DSB glass, plexiglass, wire glass or insulated glass.

HEAVY-DUTY HARDWARE (where not standard)



Double-end hinge

3" Track

High performance hardware features 10 gauge end hinges, heavy-duty top bracket and 3" sealed roller with 5/8" stem.

MULLIONS



Carry-away, roll-away or swing-up mullions are available on select sizes.

BREAK-AWAY SECTION



Single section and double sections available on select sizes.

PASS DOOR



32" wide x 80" high (.81 m x 2.3 m), max 16'2" (4.9 m) wide section.

EXHAUST PORT



Can be cut into any type of sectional door. Available in select sizes.



WindCode® reinforcement available up to W1 design pressure (DP) 14 PSF, depending on size. Doors tested 50% greater than DP.



Upgrade your standard door with industrial-grade components.

HIGH CYCLE SPRINGS



25,000, 50,000 or 100,000 cycle springs available.

DISTRIBUTED BY:



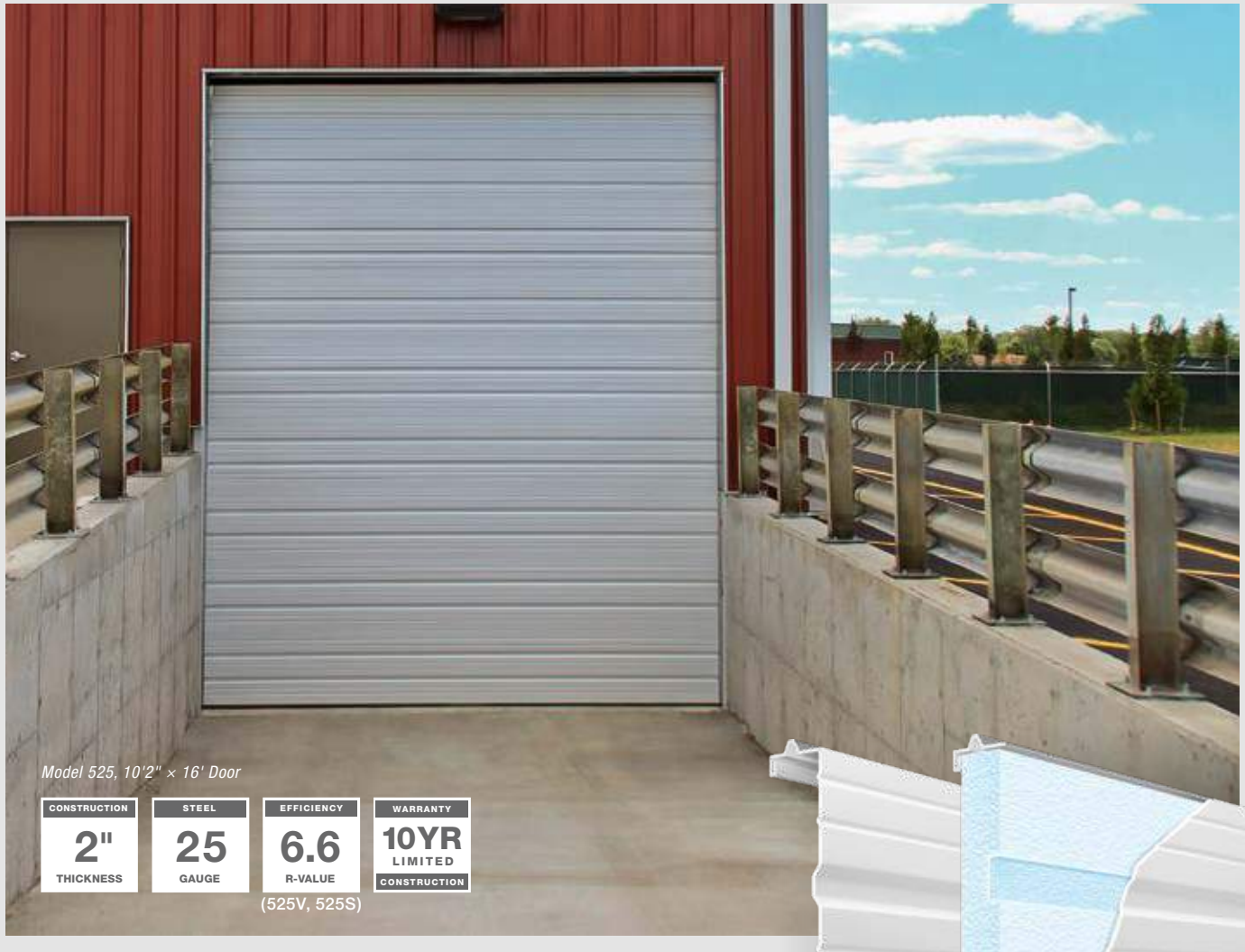
For more information on these and other Clopay products, call 1-800-526-4301 or visit clopaycommercial.com



©2018 Clopay Building Products Company, Inc., a Griffon company.



CLOPAY COMMERCIAL – MODELS 525, 525V, 525S industrial series



Model 525, 10'2" x 16' Door

CONSTRUCTION	STEEL	EFFICIENCY	WARRANTY
2" THICKNESS	25 GAUGE	6.6 R-VALUE	10YR LIMITED CONSTRUCTION

(525V, 525S)

RIBBED STEEL DOORS

Available non-insulated (525) or insulated (525V/525S) with environmentally safe polystyrene insulation conformed to panel. Ideal for commercial and industrial building applications.

- Polystyrene insulation available on 525V and 525S.
- 3-stage paint process delivers a virtually maintenance-free finish.
- Tog-L-Loc® advanced design, eliminates the need for antiquated welds and rivet construction, improving rust and leak prevention.
- Injection-molded lite frames with integral weatherseal are durable and seal against the elements. Many glass options available for visibility, privacy or energy efficiency.



Panels are preprimed inside and out to inhibit rust. Hot-dipped, galvanized steel is painted with primer and given a tough oven-baked polyester top coat to provide the most rust-resistant steel door available. Ten-year warranty against rust-through.

clopaycommercial.com

PANEL DESIGN



Deep Ribbed

COLOR OPTIONS



Standard White

Chocolate

Due to the printing process, colors may vary.

CUSTOM PAINT OPTION



Color Blast® offers more than 1,500 Sherwin-Williams® color options to complement your building design. This durable two-part paint system has been thoroughly tested and is backed by a five-year warranty.

Due to solar reflective formulation to meet greater than a 38 LRV, some colors may not be available.

FEATURES

STANDARD HARDWARE

- TPE astragal in aluminum retainer
- Commercial 10-ball steel rollers (nylon tires available)
- Steel step plate and lift handle
- Galvanized steel end stiles
- Inside slide lock for increased security
- 2" (50.8 mm) or 3" (76.2 mm) track
- 10,000 cycle springs
- Galvanized aircraft cable with minimum 7:1 safety factor
- Variety of track configurations to meet building specifications

MATERIALS AND CONSTRUCTION

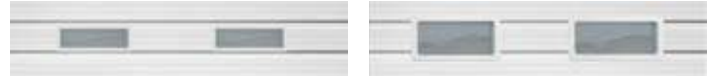
Panel Thickness	2" (50.8 mm)
Insulation	1-3/8" (34.9 mm) polystyrene (Available on Models 525V, 525S)
R-value	6.6*
Joining System	Tog-L-Loc®
Exterior Steel	25 gauge (.019" min.) (.48 mm)
Interior Cover	Vinyl backing (Available on Model 525V) Painted steel back cover (Available on Model 525S) 30 gauge (.12" min.) (.305 mm) 24 gauge (.023" min.) (.58 mm) optional
Exterior Design	Smooth steel, deep ribbed
Max Width	20'2" (6.2 m)
Max Height	18' (5.5 m)
Exterior Colors	Standard White and Chocolate. Also available in Color Blast®
Interior Color	Standard White
Limited Warranties	10-year rust-through 1-year materials and workmanship

*Calculated door section R-value is in accordance with DASMA TDS-163.

For special sizes, applications and options, consult Commercial Information Assistance (CIA) at 1-800-526-4301.

ADDITIONAL OPTIONS

WINDOW OPTIONS



24" x 6"

24" x 12"



Full-View

Glazing options for the 525 include DSB, plexiglass, tempered, wire and insulated glass. Prepainted full-view sections in Standard White or Chocolate finish are available in only DSB, plexiglass, wire glass or tempered glass. Insulated glass is not available in full-view sections on 525 doors due to weight.

HEAVY-DUTY HARDWARE (where not standard)



Double-end hinge



3" Track



Outside keyed lock

EXHAUST PORT



Can be cut into any type of sectional door. Available in select sizes.



WindCode® reinforcement available up to W1 design pressure (DP) 14 PSF, depending on size. Doors tested 50% greater than DP.

HIGH CYCLE SPRINGS



25,000, 50,000 or 100,000 cycle springs available.

DISTRIBUTED BY:



For more information on these and other Clopay products, call 1-800-526-4301 or visit clopaycommercial.com



©2018 Clopay Building Products Company, Inc., a Griffon company.



CMDC-0525-02_REV1118

CLOPAY COMMERCIAL – MODELS 664, 664V industrial series



Model 664V

CONSTRUCTION	STEEL	EFFICIENCY	WARRANTY
2"	24	6.3	10YR
THICKNESS	GAUGE	R-VALUE	LIMITED
		(664V)	CONSTRUCTION

RAISED PANEL STEEL DOORS

Available non-insulated (664) or insulated (664V) with environmentally safe polystyrene molded to the section. Ideal in commercial settings requiring a contemporary look.

- Polystyrene insulation available on 664V.
- 3-stage paint process delivers a virtually maintenance-free finish.
- Tog-L-Loc® advanced design, eliminates the need for antiquated welds and rivet construction, improving rust and leak prevention.
- Injection-molded lite frames with integral weatherseal are durable and seal against the elements. Many glass options available for visibility, privacy or energy efficiency.



Panels are pre-painted inside and out to inhibit rust. Hot-dipped, galvanized steel is painted with primer and given a tough oven-baked polyester top coat to provide the most rust-resistant steel door available. Ten-year warranty against rust-through.

PANEL DESIGN



Classic Raised

COLOR OPTIONS



Standard White Almond Desert Tan Sandtone Chocolate

Due to the printing process, colors may vary.

CUSTOM PAINT OPTION



Color Blast® offers more than 1,500 Sherwin-Williams® color options to complement your building design. This durable two-part paint system has been thoroughly tested and is backed by a five-year warranty.

Due to solar reflective formulation to meet greater than a 38 LRV, some colors may not be available.

FEATURES

STANDARD HARDWARE

- TPE astragal in aluminum retainer
- Commercial 10-ball steel rollers (nylon tires available)
- Steel step plate and lift handle
- Galvanized steel end stiles
- Inside slide lock for increased security
- 2" (50.8 mm) or 3" (76.2 mm) track
- 10,000 cycle springs
- Galvanized aircraft cable with minimum 7:1 safety factor
- Variety of track configurations to meet building specifications

MATERIALS AND CONSTRUCTION

Panel Thickness	2" (50.8 mm)
Insulation	1-3/8" (34.9 mm) polystyrene (Available on Model 664V)
R-value	6.3*
Joining System	Tog-L-Loc®
Exterior Steel	24 gauge (.023" min.) (.58 mm)
Interior Cover	Vinyl backing (Available on Model 664V)
Exterior Design	Woodgrain embossed, classic raised
Max Width	664: 20'2" (6.2 m); 664V: 20' (6 m)
Max Height	18' (5.5 m)
Exterior Colors	Standard White, Almond, Desert Tan, Sandtone and Chocolate. Also available in Color Blast®.
Interior Color	Standard White
Limited Warranties	10-year rust-through 1-year materials and workmanship

*Calculated door section R-value is in accordance with DASMA TDS-163.

For special sizes, applications and options, consult Commercial Information Assistance (CIA) at 1-800-526-4301.

ADDITIONAL OPTIONS

WINDOW OPTIONS



19-1/2" × 12"

19-1/2" × 12" (49.5 cm × 30.5 cm) window lite with rigid cellular PVC frame. SSB, DSB or 1/8" (3.2 mm) clear acrylic window panes are available.

HEAVY-DUTY HARDWARE (where not standard)



Double-end hinge



3" Track



High performance hardware features 10 gauge end hinges, heavy-duty top bracket and 3" sealed roller with 5/8" stem.

EXHAUST PORT



Can be cut into any type of sectional door. Available in select sizes.



WindCode® reinforcement available up to W1 design pressure (DP) 14 PSF, depending on size. Doors tested 50% greater than DP.



Upgrade your standard door with industrial-grade components.

HIGH CYCLE SPRINGS



25,000, 50,000 or 100,000 cycle springs available.

DISTRIBUTED BY:



For more information on these and other Clopay products, call 1-800-526-4301 or visit clopaycommercial.com



©2018 Clopay Building Products Company, Inc., a Griffon company.



CLOPAY COMMERCIAL

break-away bottom section



WARRANTY
1YR
LIMITED
CONSTRUCTION

FEATURES

Break-away bottom sections are excellent in high-traffic dock areas where damage to the bottom sections of doors is a common occurrence.

- Can swing up to 45 degrees inward or outward.
- Continued operation once bottom section has been inadvertently hit.
- Resets in seconds.
- Interior cover prevents damage should section be struck.
- Available on 3200, 3220, 3717, 3718, 3720, 3722, all 520 Series and all 524 Series Clopay doors.
- Can be retrofit to existing products.
- Available in single or double bottom sections.

clopaycommercial.com

Clopay's break-away bottom sections will release from the track and swing up to a full 45° angle inward or outward, preventing further damage to the door. The cable attachment at the bottom of the second or third section enables the door to continue operating after being struck. The bottom sections can be snapped back into place in less than a minute. The bottom sections have a fiberglass or polycarbonate sheet on the inside of the sections to resist dents and maintain an attractive appearance. These sections are available on the 1-3/4" (44.5 mm) and 2" (50.8 mm) thick 3000 Series polystyrene and polyurethane insulated doors, and on all 520 and 524 Series ribbed steel doors.



Inside View of Single Bottom Section

SPECIFICATIONS

- **Quality Assurance:** Doors shall be insulated or non-insulated steel sectional overhead type as manufactured by Clopay Building Products Co. Each door is provided as one complete unit including sections, brackets, tracks, counterbalance mechanism and hardware (list options) to suit the opening and headroom available. Door is provided with a break-away bottom section as an integral part of the door, exterior to match door face. Section provided for 2" (50.8 mm) or 3" (76.2 mm) rollers and track as required. The interior of the bottom section is lined with fiberglass or 1/8" (3.2 mm) polycarbonate to prevent damage to the section.
- **Options for Break-Away Bottom Section:** Inside slide lock mechanism provides additional security. Padlock may be applied.

SPECIFICATION REQUIREMENTS:

- **Single Break-Away Bottom Section:** Vertical lift doors or door must have at least 36" (91.4 cm) of hi-lift. Maximum door width: 20'2" (6.2 m).
- **Double Break-Away Bottom Section:** Vertical lift doors or door must have at least 60" (1.5 m) of hi-lift. Maximum door width: 14'2" (4.3 m). Doors over 12'0" (3.7 m) will have center hinge.
- **Single and Double Break-Away Bottom Section:** Not compatible with door drop safety device or safety bottom brackets. Not compatible with doors requiring a double torsion shaft.
- **Materials and Construction:** Break-away bottom sections are available on the 1-3/4" (44.5 mm) and 2" (50.8 mm) Clopay brand 3000 Series thermally broken insulated doors, and the 520 and 524 Series ribbed steel doors. Section will be provided with flexible neoprene rubber side edges. Bottom astragal retainer and flexible astragal are provided. Interior of section is lined with either fiberglass (3000 Series) or 1/8" (3.2 mm) polycarbonate (500 Series).

DISTRIBUTED BY:



For more information on these and other Clopay products, call 1-800-526-4301 or visit clopaycommercial.com



©2016 Clopay Building Products Company, Inc., a Griffon company.

